

Qwest iQ Networking – VPN Extension

DESCRIPTION

A VPN Extension is an optional feature that is available with Qwest iQ[®] Networking Private Ports and Qwest iQ Networking Enhanced Ports with or without Secure IP Gateway. VPN Extensions are used to extend a customer's Layer 3 MPLS closed user group to site locations not served by Qwest's MPLS network. A VPN Extension consists of an Internet access connection and a device at the extension location that creates an IPsec tunnel into the Qwest MPLS network.

FEATURES

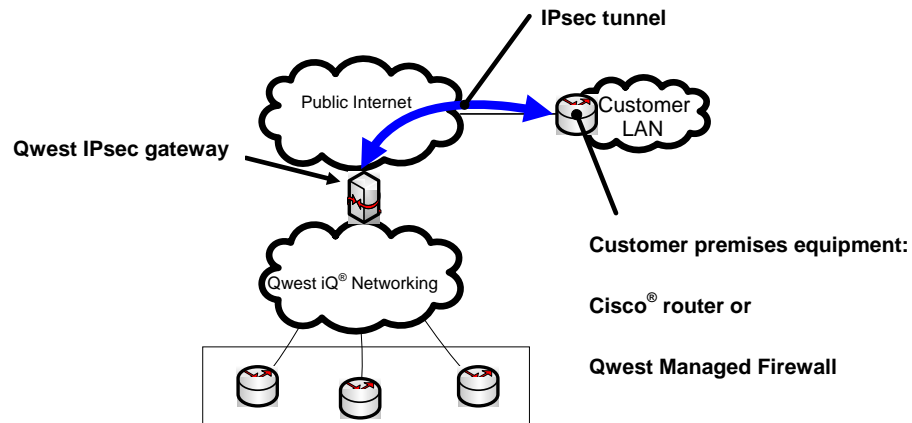
- Qwest-managed and customer-managed offering
- Domestic and international connectivity
- IPsec encryption standard over the public Internet
- Dedicated access
- Qwest-permissible Cisco[®] routers supported
- Optional IPsec tunnel management*
- Qwest-managed VPN extensions use Check Point[®] firewalls

*A complete VPN Extension solution requires CPE and optional management services that are not included as part of Qwest iQ Networking service and must be ordered separately.

BENEFITS

- Secure connectivity delivered to locations via dedicated IP connectivity to locations not served by MPLS
- IP access transports currently in use by the customer utilized
- Flexibility to elect to purchase Internet access from a third party

- Optional Total Customer Agency, which is available as part of the Comprehensive Management type offered under separate Qwest Integrated Management Service for managing the resolution of service and transport faults



Customer MPLS Closed User Group is made up of:

- All Qwest iQ® Networking Private Ports
- All Qwest iQ® Networking Enhanced Port with Secure IP Gateway ("SIG")
- All Qwest iQ® Networking Enhanced Ports
- A combination of Private and Enhanced Ports without SIG

Availability of Qwest services varies. Please refer to the following for availability details about Qwest iQ Networking:
[HTTP://qwest.com/legal/docs/availability.pdf](http://qwest.com/legal/docs/availability.pdf)