



CenturyLink® E-Line Service with Adaptive Network Control

CenturyLink Ethernet Service powers secure, high-performance network solutions that enable voice, video and data applications. CenturyLink® E-Line Service with Adaptive Network Control Solutions offers point-to-point and point-to-multi-point private connectivity with scalable, dynamic bandwidth making it ideal for providing high-speed connections among corporate headquarters, data centers and other business locations around the world to migrate legacy networks and equipment to Ethernet, expand existing WANs and get new applications online faster.

Business Solutions

CenturyLink® E-Line Service offers a turnkey Ethernet solution with Site Readiness inside wiring and Advanced Technical Services solution design, implementation planning and activation support, making it fast and easy to deploy new Ethernet networks and locations.

With end-to-end availability, class of service, and SLAs, customers can rely on CenturyLink® E-Line service as the foundation for delivering applications like high-performance computing, data replication, storage and archival, business continuity, voice communications and video conferencing.

CenturyLink® E-Line Service with Adaptive Network Control Solutions software-defined networking (SDN) capabilities enable the network to respond to business needs in real-time, transforming how organizations design and manage their networks.

The Service Includes

CenturyLink® Enhanced Management: Provides visibility into network performance characteristics on an end-to-end, site-by-site basis, so customers can better understand the demands on their network and how to streamline operations.

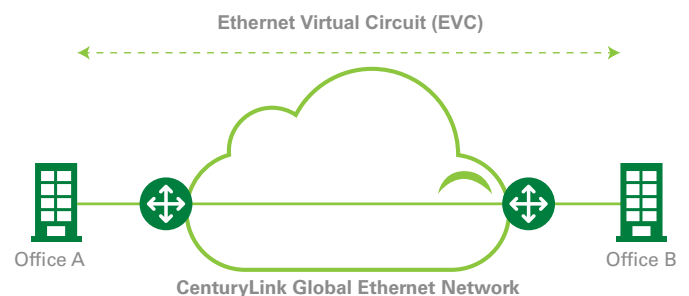
CenturyLink® Dynamic Capacity: Gives customers the ability to scale their bandwidth by up to 300% either on demand or automatically to accommodate traffic fluctuations from both planned and unplanned events.

CenturyLink® Cloud Connect Dynamic Connections:

Provides you with secure, real-time connectivity, enabling you to immediately link your data center and cloud environments. Through a secure portal or API integration, you can choose the locations you want to connect (or disconnect), to and from, when you demand it. With billing on a “pay-as-you-go” model, no long-term contract and no early termination fees*, you have the control and flexibility you need to better manage operational expenses.

CenturyLink® E-Line Service: Runs over a secure, private MPLS backbone. Together with CenturyLink’s portfolio of security services, CenturyLink E-Line Service provides a highly secure network solution on which to run your mission critical applications.

E-Line Point-to-Point EPL



*A CenturyLink master services agreement for network services with minimum term and early termination fees is required to gain access to Dynamic Connections.

Technical Features / Capabilities

- Layer 2 Ethernet over private MPLS
- Point-to-point and point to multi-point configurations
- Port Speeds: 100 Mbps, 1 Gbps, 10 Gbps
- Bandwidth Increments: 2 Mbps to 6 Gbps*
- EVPL Class of Service: Basic, Enhanced, Dedicated
- EPL class of service is always dedicated
- Availability SLA: 99.999%
- End-to-End Ethernet testing and monitoring
- Enhanced Management and Dynamic Capacity**
- CenturyLink® Site Readiness inside wiring
- CenturyLink® Advanced Technical Services
- MEF CE 2.0 Certified

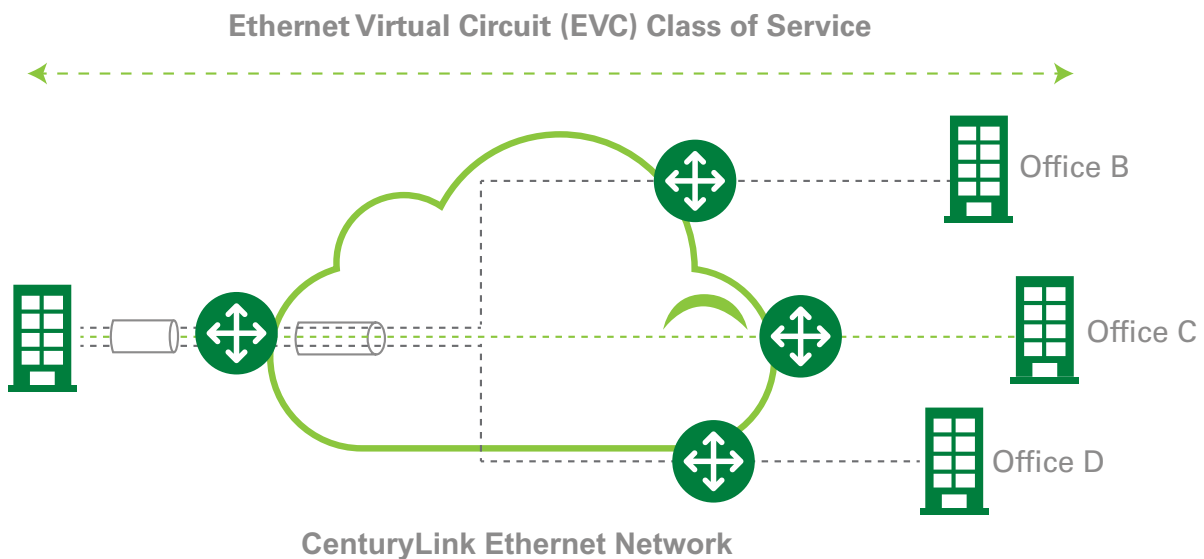
Why Choose CenturyLink E-Line Service?

Available in 198 markets across North America, EMEA, Latin America and Asia Pacific

2017 MEF Ethernet Excellence Awards:

- Best SD-WAN Managed Service, Global
- Retail Service Provider of the Year, Global
- LSO Leadership, Global
- Retail Service Provider of the Year, North America
- Wholesale Service Provider of the Year, North America
- Enterprise Application of the Year for Government Proof of Concept Demonstration
- Proof of Concept Showcase Excellence Award, Bronze

E-Line Point to Multi-point EVPL



* 4-6Gbps speeds subject to availability

** Dynamic Capacity availability dependent on bandwidth and location.

Call 1.877.453.8353 | Click centurylink.com | Email info@centurylink.com

