



PRODUCT OVERVIEW

CenturyLink® **Fiber+ Enterprise**

Fiber-based data, voice, and cloud-based applications

The essential services you need, tailored to your business

CenturyLink® Fiber+ Enterprise provides you with the high-performance communication services that are essential to your business. Our voice and internet solutions come with email accounts, data backup, and tools to manage your website and online marketing initiatives. Take advantage of the fiber connection that's already in your area, and the reliability of the CenturyLink network, backed by a service level agreement (SLA).

First, choose from two connection options, depending on your data and internet needs

For companies that need a business-grade connection to support internet traffic

Internet Port provides a reliable, high-speed connection to the internet, so your business can communicate with mobile employees, partners, and third-party websites.

For companies that need to connect multiple locations with a private network

Private Port offers MPLS connectivity between locations to the internet (available with multiple port speeds).

Next, customize your cloud-based business services

Fiber+ Enterprise comes fully loaded with our cloud-based applications including email, collaboration, productivity, web tools and online data backup. Plus, you get the flexibility to customize your services to meet your business needs.

Email, Collaboration & Productivity

20 licenses of Microsoft® Office 365® Business Essential (online version), which includes:

- Microsoft® Exchange Online email box (50GB mailbox)
- Microsoft® Skype for Business web conferencing with HD video, screen sharing and instant messaging
- Microsoft® SharePoint® Online: 10GB shared, plus 500MB per seat
- Microsoft® Office Online (create/edit Excel, PowerPoint and Word via web browser)
- Anti-malware protection and anti-spam filtering
- OneDrive for Business (1TB of personal file

storage per user)

Web Presence

- Domain Name registration and transfer
- 10GB web hosting
- Search Engine Submission –XML site map
- Cloud Fax 250 pg/month

Cloud Backup

- 20 licenses of online data backup for PCs and laptops (10GB per seat)

Online Account Management

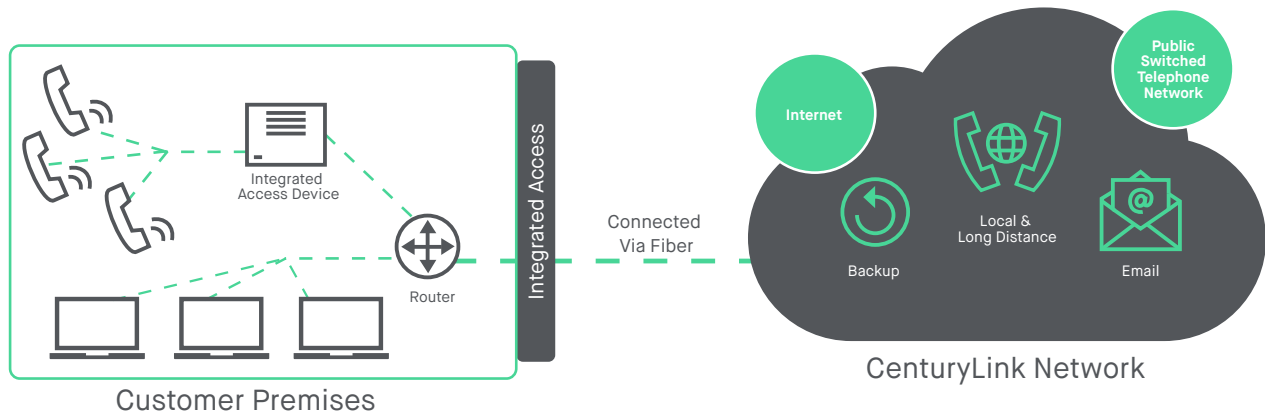
- Access account information
- Manage the products and services on your account
- View and pay bills
- Access support
- 24/7 availability
- Make service changes

Then, choose your voice service

Choose your voice service depending on whether you have existing equipment you want to keep, such as analog phones or a PBX. (If you need data service only, see details on back page).

Integrated Access

Your data, internet and voice are integrated over a single connection. You can keep your existing analog phones and still get all the high-speed, symmetrical connectivity to your services. CenturyLink provides your integrated data and voice connection, plus the router and integrated access device to support the network and voice services.

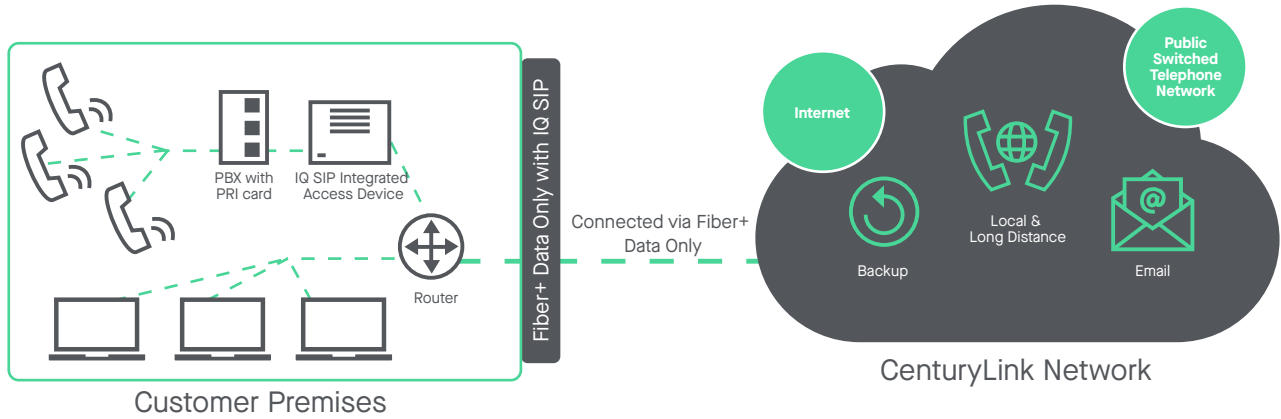


| | Internet | Voice | Support |
|------------------|--|--|---|
| Basic Components | <ul style="list-style-type: none"> • Business-class symmetrical speeds starting at up to 50Mbps/50Mbps • Internet Port • Service level agreement for network availability • Quality of service end-to-end that prioritizes your most delay-sensitive traffic | <ul style="list-style-type: none"> • Includes 6 VoIP lines • Includes integrated access device with integrated firewall • 3,000 minutes of off-net domestic long distance | <ul style="list-style-type: none"> • Standard maintenance <ul style="list-style-type: none"> – 5 days a week, 8 hours/day |
| Options | <ul style="list-style-type: none"> • Symmetrical speed upgrade options up to 1Gbps • Private Port¹ | <ul style="list-style-type: none"> • Up to 24 lines available • 5,000 minutes of off-net domestic long distance for 14–24 lines • Additional calling features available | <ul style="list-style-type: none"> • Premium maintenance (where available) <ul style="list-style-type: none"> – 7 days a week, 24 hours a day, 365 days – Additional MACD changes – Routing and firewall options |

¹ Network-based security may be required with Private Port. Speeds may not be available in your area.

Or

Fiber+ Enterprise Data Only: Supports business-class symmetrical speeds and the flexibility to add our robust business voice services; Fiber+ Data Only can be combined with CenturyLink IQ SIP Trunk service.

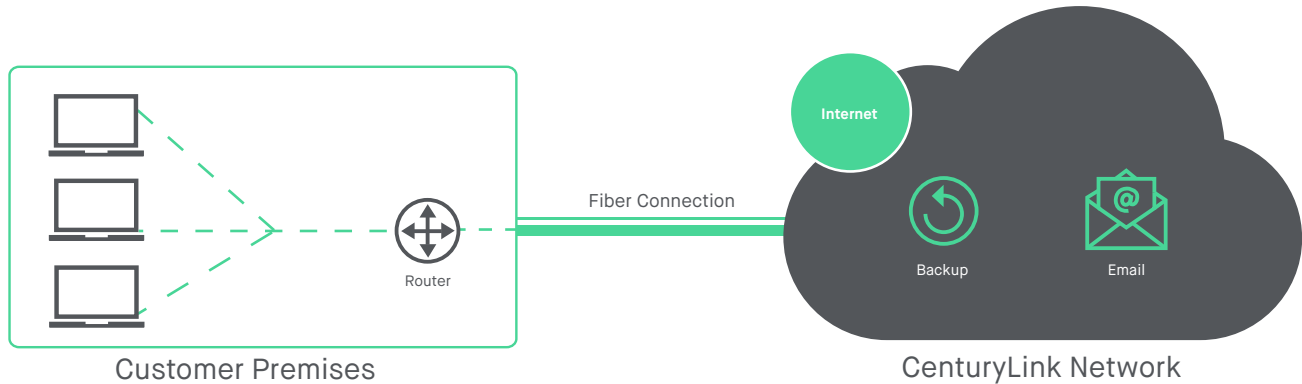


| | Internet | Voice | Support |
|------------------|--|--|---|
| Basic Components | <ul style="list-style-type: none"> • Business-class symmetrical speeds starting at up to 50Mbps/50Mbps • Internet Port • Service level agreement for network availability | <ul style="list-style-type: none"> • For customers that require an ISDN PRI hand-off to an existing TDM PBX or native SIP hand-off to an IP PBX or Hosted VoIP, which offers IP phones and advanced collaboration services to end users | <ul style="list-style-type: none"> • Standard maintenance <ul style="list-style-type: none"> – 5 days a week, 8 hours/day |
| Options | <ul style="list-style-type: none"> • Up to 1Gbps/1Gbps of symmetrical speeds • Enhanced Port or Private Port¹ | <ul style="list-style-type: none"> • Can be combined with CenturyLink IQ SIP trunk • Designed to meet customer-specific voice requirements • Customer IP PBX calling features, combined with advanced business continuity options provided by the IQ SIP Trunk service, delivers a resilient communication solution | <ul style="list-style-type: none"> • Premium maintenance (where available) <ul style="list-style-type: none"> – 7 days a week, 24 hours a day, 365 days – Additional MACD changes – Routing and firewall options |

1. Network-based security may be required with Private Port. Speeds may not be available in your area.

Internet Data Only

CenturyLink® Fiber+ Enterprise Data Only provides your business with high-speed symmetrical access up to 1Gbps. Fiber+ Enterprise Data Only includes the business applications to enable collaboration services for your business with Office 365, web hosting, data backup and the online Office application suite. When you take advantage of the CenturyLink fiber connection that's already in your area, your business gains greater flexibility and speed.



Basic Components

- Business-class symmetrical speeds starting at up to 50Mbps/50Mbps
- Service level agreement for network availability

Options

- Up to 1Gbps/1Gbps of symmetrical speeds



Centurylink is built around the needs of your business



Reliable Network

CenturyLink services are provided over a proven network that we own and operate, so you can rely on consistent performance.



Local Teams

We have local leadership, account management, and technical support teams that are always there for your business.



Tailored Solutions

We provide a broad range of communications capabilities, such as voice, internet, cloud, and managed services to get your business where it needs to go.



Stable Company

CenturyLink has been serving businesses like yours for over 80 years, and we provide the expertise and ongoing investment in technology to bring you the very latest capabilities.



Cloud Capabilities

We can help you take full advantage of the cloud with reliable access, secure connectivity and fast upload speeds.

Speeds may not be available in your area. Listed speeds vary due to conditions outside of network control, including customer location, equipment and access through a wireless connection, and are not guaranteed. See centurylink.com/InternetPolicy for additional network performance information.

Call 1.877.453.8353 | Click centurylink.com | Email info@centurylink.com



Services not available everywhere. CenturyLink may change or cancel products and services or substitute similar products and services at its sole discretion without notice. ©2018 CenturyLink. All Rights Reserved. The CenturyLink mark, pathways logo and certain CenturyLink product names are the property of CenturyLink. All other marks are the property of their respective owners. P0130039