



CenturyLink IQ[®] SIP Trunk

› PRODUCT GUIDE

The flexibility to meet your
ever-changing technology needs.



CenturyLink[®]
Business

CenturyLink puts it all together for you: IP technology expertise, strong local support, and a complete solution on a carrier-grade, fiber optic national network.

Why CenturyLink IQ SIP Trunk?



STRONG BUSINESS SOLUTIONS:

A broad portfolio of IP services, CPE, and solutions to drive productivity

- Advanced Ethernet capability
- Advanced voice and data solutions
 - MPLS VPN
 - VoIP (SIP Trunk, IPLD/IPTF, Managed VoIP)
 - Managed Security
- Wide range of CPE portfolio, from Cisco, Avaya, ShoreTel, ADTRAN, and others
- Includes feature-rich capabilities like Call Forwarding, Fixed-to-Mobile Convergence, Business Communicator, and Voicemail



STRONG NATIONAL NETWORK:

A fully-owned and operated local and national network to help ensure total accountability

- Robust nationwide backbone
- Extensive local fiber networks
- Responsive support for network provisioning, troubleshooting, and repair
- Technology investment and deployment

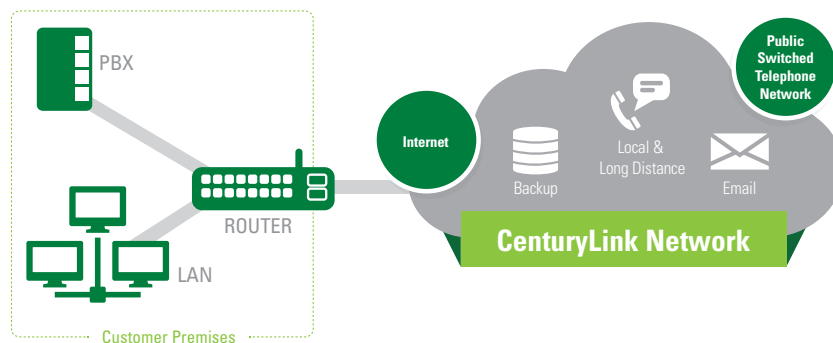


NATIONAL PRESENCE WITH STRONG LOCAL SUPPORT:

Locally based resources and commitment to our local markets

- A strong knowledge of and presence in our local markets
- Locally-based technicians, sales, and support teams
- A commitment to providing advanced services to the markets we serve

SIP Trunk



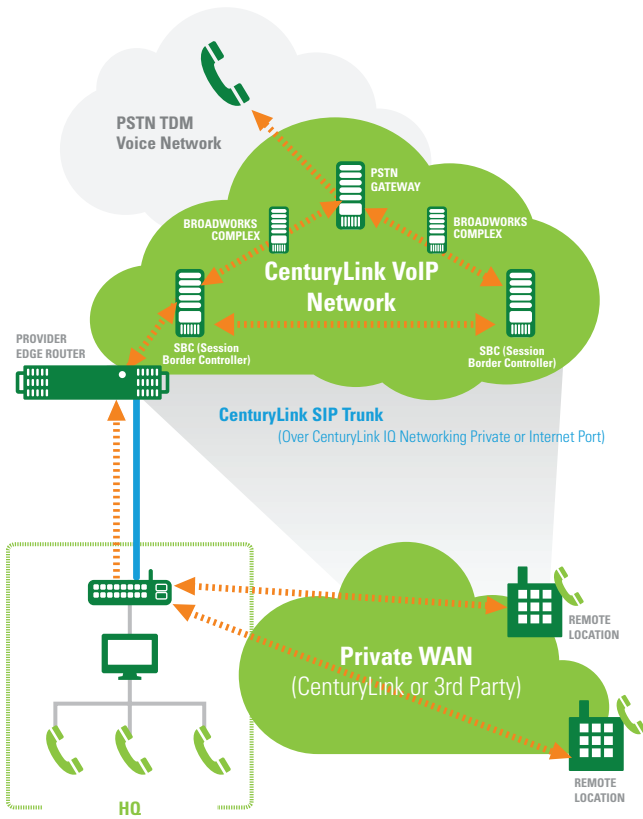
- Pay only for what you need when you need it
- Flexibility to increase service during peak seasons
- All traffic on same circuit reduces complexity
- No need for separate voice and data IP expertise

- Efficient use of bandwidth for voice and data delivery
- Important business features including PSTN/PRI Failover and Administrator and End User Portals

Centralized Deployment Model

Architecture:

- Provide a centralized trunking service at HQ by consolidating PRIs and POTs
- Branch offices reach service through the main site via their private QoS enabled WAN
- E911 or V911 services are still provided with local service



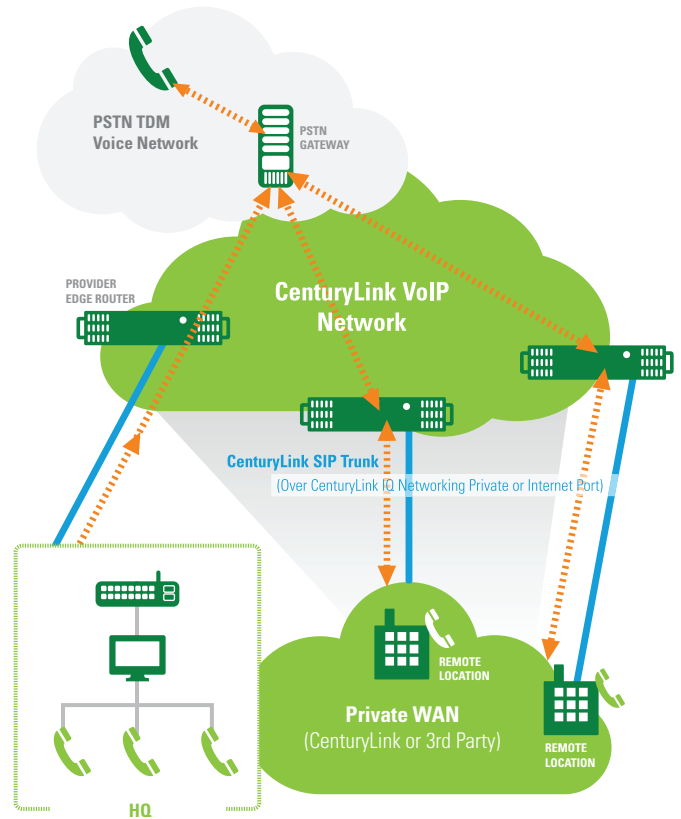
CenturyLink SIP Trunk

Voice Path

Decentralized Deployment Model

Architecture:

- Provide SIP Trunk service supported at each location
- Branch offices have their own SIP Trunk service
- E911 or V911 services are still provided with local service



BENEFITS

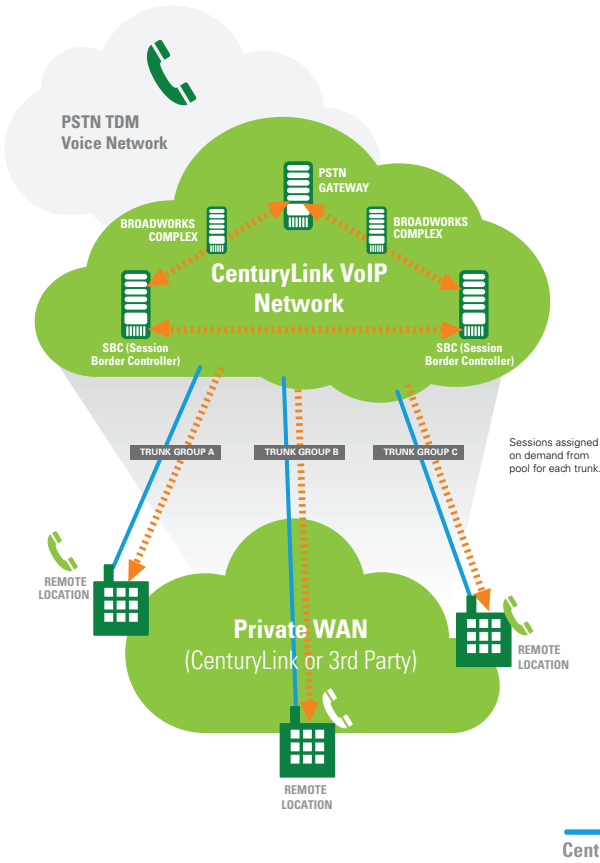
- Consolidation of voice and data at a centralized location
- Ease of management
- Reduction of PSTN access

- Direct access to PSTN from each site
- Can survive a private WAN failure

Pooled Session Management Model

Architecture:

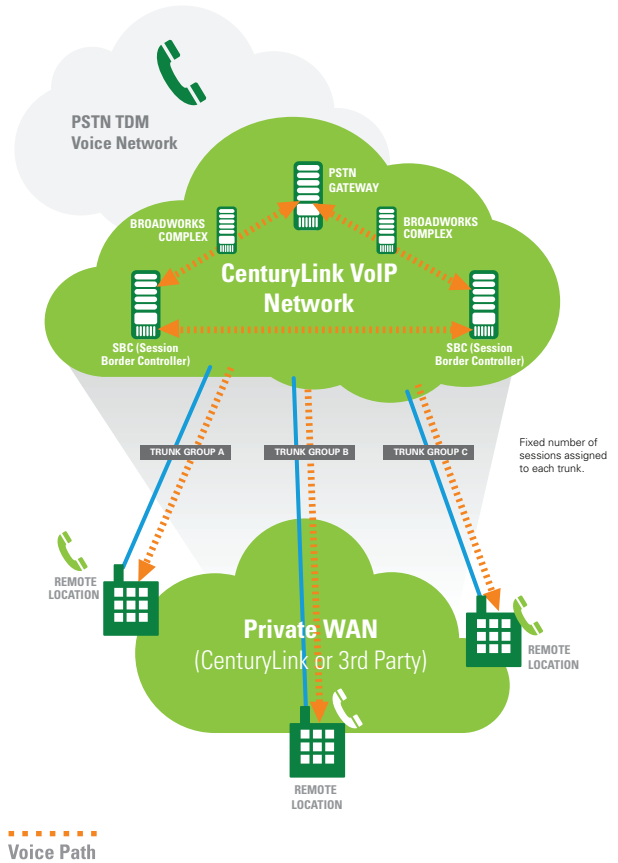
- Sessions assigned from pool "on demand" (with a max number of sessions per trunk group)
- Calls are not blocked until exhausting the Enterprise session pool, or SIP Trunk Termination location reaches max session limit



Non-Pooled Session Management Model

Architecture:

- Sessions assigned per trunk group



BENEFITS

- Provides economies of scale
- Flexibility to add/delete sessions to pool as needed
- Max session allocation prevents single location from monopolizing sessions

- Max concurrent sessions are permanently assigned to a location and are available

For more information, contact your CenturyLink representative or visit centurylink.com/business