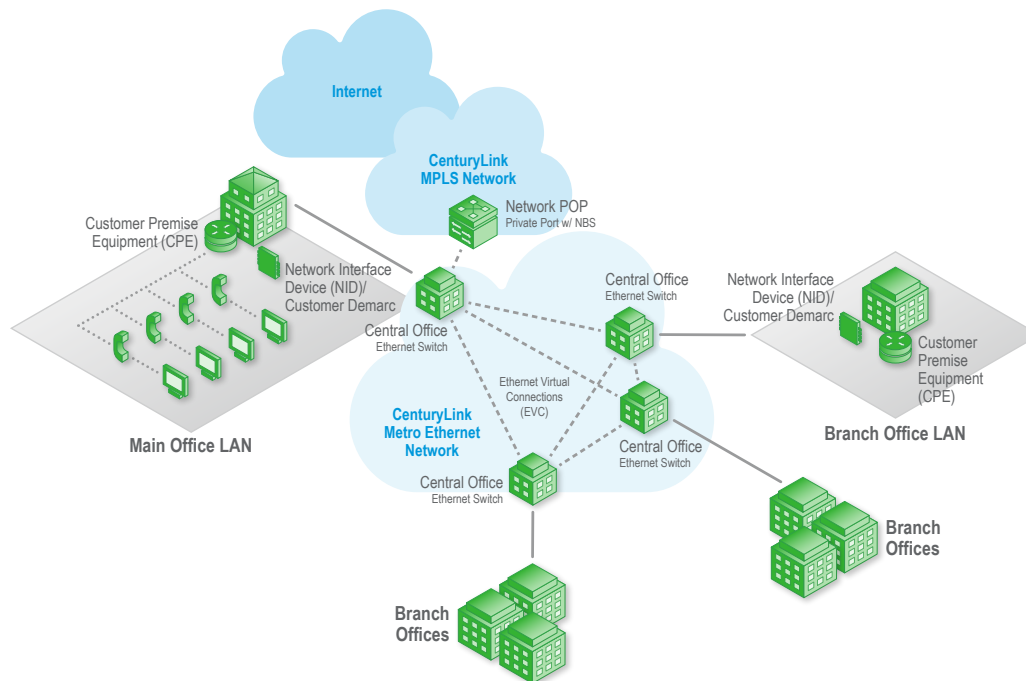


# CenturyLink® Metro Ethernet

Metro Ethernet from CenturyLink is a Layer 2 networking service providing a greater level of security and improved bandwidth for extending your office LAN network to multiple business locations within metro areas.



Ethernet provides a secure, reliable, high-performance backbone to help your company manage data growth, drive application performance and securely connect your locations, applications and data. Metro Ethernet service combines the power of Ethernet and optical technologies across metropolitan area networks (MANs) to provide cost-effective, scalable and secure bandwidth. Metro Ethernet provides local area network LAN-to-LAN connectivity between two or more customer locations within a metro area. Our Metro Ethernet solution is based on distributed Layer 2 switching and shared transport data bandwidth suitable for driving greater productivity and efficiency of your workforce and sensitive business applications. Ethernet Network Solutions utilize dedicated, private connections while you maintain control of your routing to achieve higher security of your traffic.

## Technical Specifications

- Multiple topology options: Point-to-Point, Multipoint-to-Multipoint and Point-to-Multipoint
- Supports port-based and VLAN-based services for a wide variety of applications
- Includes a Network Management Device (NID) on-premises to serve as a Monitoring and Management device and as the demarc to the customer
- Prioritization of service (CoS/QoS) available in multiple bandwidth profiles for a variety of applications
- Deterministic routing enables a low latency connection for critical business traffic
- Redundant ring configuration with redundant processors and power supplies; utilizes Automatic Failover within the backbone
- Proactively monitored and maintained 24x7x365 through proven practices to mitigate unexpected outages and downtime
- Backed by industry competitive Service Level Agreements (SLAs)
- Supported by end-to-end web-based reporting tools on a per site basis
- MEF certified