

Interconnect Mediated Access 32.0

Connection Guide

How to set up and connect to IMA

April 2, 2012

Document information

If you use this guide, please let us know at imadocs@centurylink.com. We welcome your feedback on this document.

The versions of this guide for the new release are listed below:

Document date	Description
March 26, 2012 [draft]	Draft guide for CMP review posted at http://www.centurylink.com/wholesale/cmp/review.html
April 2, 2012	Final guide posted at http://www.centurylink.com/wholesale/cmp/review_archivesystem.html
April 23, 2012	Final guide posted at http://www.centurylink.com/wholesale/ima/gui/index.html

You can find guides for prior releases at http://www.centurylink.com/wholesale/cmp/review_archivesystem.html.

Change log

Changes to IMA for this release are provided through CMP (change management process) at <http://www.centurylink.com/wholesale/cmp/index.html>.

CMP revisions specific to this guide are as follows:

- Updated the document with the Java Runtime Environment version change from 1.4.2_xx to 1.6.0_xx.
- One more entry is added to the Java Policy File to support Java Runtime Environment 1.6.0_xx.
- Java Policy File and Java Policy tool images have been changed.

Other changes for this release:

- 'Downloading the Java Plug-in section' has been changed to 'Java Desktop Runtime Environment for IMA'.

Copyright and Trademarks

©2001–2012 CenturyLink, Inc. All Rights Reserved. The CenturyLink mark, pathways logo and certain CenturyLink product names are the property of CenturyLink, Inc. All other marks are the property of their respective owners.

Contents

Document information	2
Change log	2
Copyright and Trademarks	2

1—Getting started

CenturyLink SYADs	4
CLECs	4
System security	5
IMA hours (Mountain Time)	5
Additional resources	6
Web sites	6
Documents	6

2—Requirements

Software requirements	7
Hardware requirements (minimum)	7
Java Desktop Runtime Environment for IMA	8

3—E-business Internet connection

Requesting a digital certificate	9
Downloading your digital certificate	10
Verifying the installed certificate	12
Modifying the java.policy file	14
Importing your digital certificate to Internet Explorer	16

4—Connecting to IMA

Logging in to IMA for the first time	19
Creating your personal profile	20
Modifying your personal profile	21
Changing your password	21

Index

.	23
-----------	----

Getting started

This guide provides

- basic information about Interconnect Mediated Access (IMA)
- software and hardware requirements
- instructions for
 - configuring Internet Explorer
 - modifying the java.policy file
 - Internet access to IMA

This guide is intended for employees of the ISC (Interconnect Service Center), IWSC (Interconnect West Service Center), the LOC (Listing Operation Center), and Competitive Local Exchange Carriers (CLECs).

This guide assumes you have a background in telecommunications local service.

IMA is available for use by CLECs in the legacy Qwest territories within the former 14-state Qwest region.

CenturyLink SYADs

CenturyLink™ system administrators create IMA accounts for all CLECs, including establishing the first CLEC system administrator and maintaining user profiles.

CLECs

CLECs interact with IMA on two levels:

- administrators create and manage all CLEC user accounts
- users manage all service requests through IMA

IMA allows CLECs access to local service elements of the CenturyLink network and electronic access to its legacy operations support systems (OSS).

CLECs use IMA to create local service requests (LSRs) and submit them to CenturyLink for processing. LSRs contain the information CenturyLink needs to create service orders for the CLECs.

System security

IMA provides a secure environment for its users.

System security	Description and access
Username and password	<p>IMA usernames and passwords for CLEC system administrators are obtained from a CenturyLink system administrator. CLEC system administrators must receive these before they can access IMA.</p> <p>CLEC system administrators give CLEC users their username and password. To ensure security, new users should change their individual password the first time they log in to IMA. (See “Changing your password” on page 21.)</p> <p>You can change your password at any time. (System administrators can also reset passwords.)</p>
User PIN and Corporate ID	<p>PINs and IDs are obtained from a CenturyLink Wholesale Markets service manager. Only users who have these credentials can enter the IMA secure environment and access its data, preventing unauthorized persons from gaining access to protected information.</p>

IMA provides an additional level of security by letting the CLEC system administrators decide the access rights users will need—administrator privileges or user privileges. Access rights define specific privileges users have to operate within IMA. If a user performs the tasks of both an administrator and a user, this user requires two IMA usernames and passwords, one as a user and one as an administrator.

An administrator can inactivate a user when necessary, preventing the user from accessing IMA and data stored in any of the databases. For more information on CLEC system administrative privileges, see the *CLEC System Administrator's Guide* (<http://www.centurylink.com/wholesale/ima/gui/index.html>).

IMA hours (Mountain Time)

Monday–Friday	6 a.m. to midnight
Saturday	6 a.m. to 9 p.m.
Sunday	11 a.m. to 7 p.m.

Additional resources

Web sites

IMA Access

<https://ima.centurylink.com/ima>

Products and Services

<http://www.centurylink.com/wholesale/pcat/index.html>

CenturyLink E-Business—Digital Certificate Procedures

<http://ecom.centurylink.com>

Wholesale Customer Contacts business procedure

<http://www.centurylink.com/wholesale/clecs/escalations.html>

Wholesale Resources—IMA

<http://www.centurylink.com/wholesale/ima/index.html>

Documents

In addition to this document, CenturyLink provides four other guides to help you use IMA.

The first three guides are available at

<http://www.centurylink.com/wholesale/ima/gui/index.html>

- *CLEC System Administrator's Guide*—guidelines for managing CLEC users' accounts
- *Facility-Based Directory Listings Guide*—guidelines for submitting orders for facility-based directory listings
- *IMA User's Guide*—guidelines for preparing, submitting, and following up on LSRs

The fourth guide is available at

<http://www.centurylink.com/wholesale/training/coursecatalog.html>:

- *Loop Qualification and Raw Loop Data CLEC Job Aid*—guidelines for retrieving raw loop data and for checking whether a loop qualifies (for CenturyLink HSI/Broadband Service or for unbundled ADSL service)

Requirements

This chapter describes hardware and software requirements for IMA. If non-IMA applications are running concurrently with IMA, these requirements may need to be increased.

Note: When a new version of IMA is installed, you must log out of IMA and log back in to continue working.

Software requirements

Important: *CenturyLink only supports and certifies Windows XP as the operating system for IMA. CenturyLink recommends you use Internet Explorer 7.0 as your browser when running Windows XP. IMA may function using different browsers and Windows operating systems, however, CenturyLink will not be responsible for any problems encountered when using operating systems other than Windows XP.*

- Microsoft Windows XP
- Internet Explorer 7.0 (recommended)
- Java Runtime Environment 1.6.0_xx or higher for Internet Explorer. However, CenturyLink recommends that Internet Explorer users upgrade to java Runtime Environment 1.6.0_30.

Hardware requirements (minimum)

- Intel Pentium 233 MHz
- 17-inch SVGA monitor (800 x 600 resolution or higher)
- SVGA video card with 2 MB memory
- 96 MB RAM
- 56 Kbps modem or dedicated LAN connection to CenturyLink
- 200 MB free disk space (after all software installation and Windows virtual memory file allocation)

Additional memory (RAM) and a faster network connection and CPU may improve performance of IMA.

Java Desktop Runtime Environment for IMA

IMA is certified for Java Runtime Environment (JRE) 1.6.0_30. Please contact your desktop support if you need the Java RE for your desktop.

The Java Desktop Runtime Environment (JRE) can be found at

<http://java.com/en>

If the Java Desktop JRE has not already been installed, a **Java Runtime Environment Not Installed** popup window appears in IMA GUI. This appears only when PreOrder/Order/PostOrder is launched for the first time and the Java Desktop Runtime Environment has not been installed.

Note: It might be possible for an unsupported browser to run the PreOrder/Order/PostOrder GUI after the Java Runtime Environment has been installed. If you encounter problems, however, CenturyLink first recommends that you install IE 7 browser.

E-business Internet connection

CenturyLink E-business digital certificates (or digital IDs) are issued for each of your employees. They are required for each personal computer used to access CenturyLink systems via the Internet.

E-business digital certificate registration is a one-time process and must be renewed every five years.

You must first request a digital certificate before starting the registration process.

Requesting a digital certificate

The CenturyLink E-Commerce group obtains the VeriSign and legacy Qwest cobranded digital certificates needed to access IMA via the Internet.

The digital certificate process is administered by the CenturyLink WSSA (Wholesale Systems Security Administration) group. This group has responsibility over these certificates for end users, including revocation of a certificate and updating user information.

To request a digital certificate

- 1 Contact your CenturyLink service manager at:
<http://www.centurylink.com/wholesale/clecs/accountmanagers.html>

Note: You may also go to the Wholesale Systems Web site at
<http://www.centurylink.com/wholesale/systems/generalinfo.html> for request information and forms.

- 2 Fill out the digital certificate request form.
- 3 E-mail the completed form to your CenturyLink service manager.

The CenturyLink service manager verifies that the information is complete and correct and then forwards your request to WSSA. The WSSA sends your information to ECOM to assign the certificate and PIN information.

Important: All digital certificate requests must go through a CenturyLink service manager. Under no circumstances should you e-mail your request directly to the CenturyLink Wholesale Systems Security Administration group. Your request will **not** be processed.

Once your request is processed, the information is updated in the LDAP server and an e-mail reply is sent to you. Please allow a minimum of 48 hours to process and update security databases.

The e-mail contains the following information you must have before registering your digital certificate:

- digital certificate number
- PIN
- instructions for their use

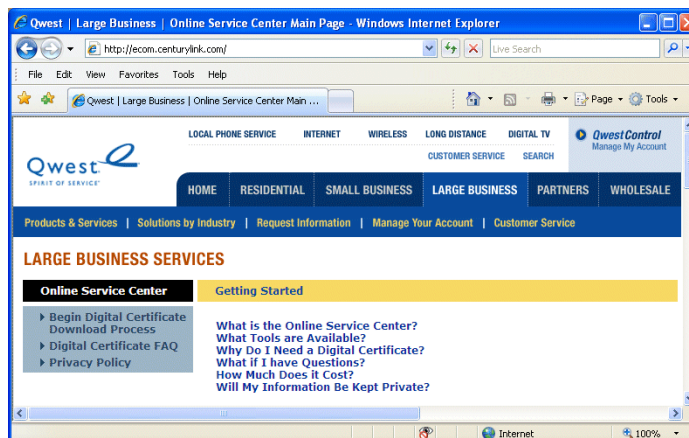
Once you've registered your digital certificate, you must have the following before you can access IMA:

- your company's corporate ID
- username
- password

Downloading your digital certificate

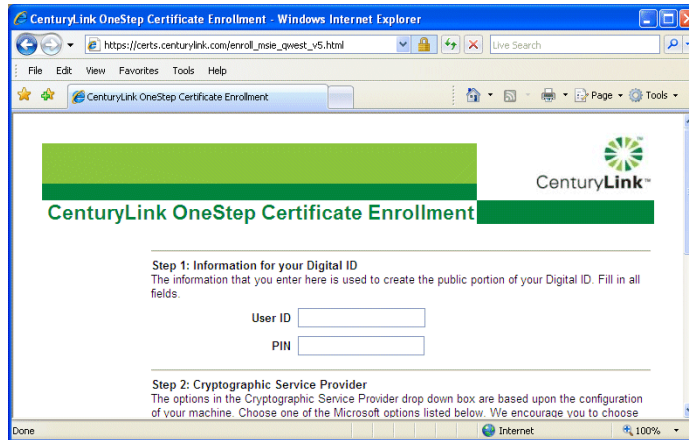
To begin the downloading process

- 1 Go to the CenturyLink Online Service Center Web site at (<http://ecom.centurylink.com>).



- 2 From the **Online Service Center** menu, select **Begin Digital Certificate Download Process**.

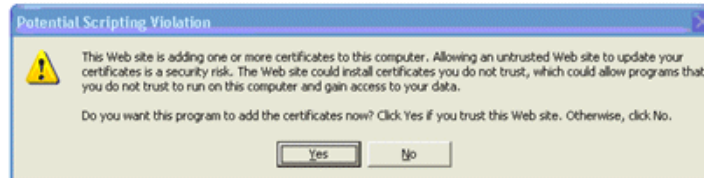
Important: *Digital certificates must be downloaded within 30 days of receipt. Digital certificates not downloaded within this time are removed from the system. If your digital certificate has been removed, you must request a new one.*



- 3 Fill in the **User ID** and **PIN** fields and click **Accept**.

Note: The private key is used by Internet Explorer to encrypt data that is transmitted from the CLEC to CenturyLink. **It is stored only on the workstation and browser version from which the key was generated.** Multiple digital certificates may be stored on a single workstation. However, if another workstation or a different browser version is used, a new private key must be generated and stored on that workstation.

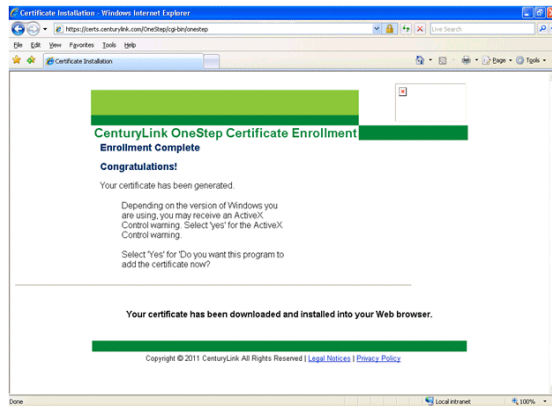
- 4 Click **Yes** if you receive an ActiveX Control warning.



- 5 Click **Yes** at the security warning to proceed with installation.

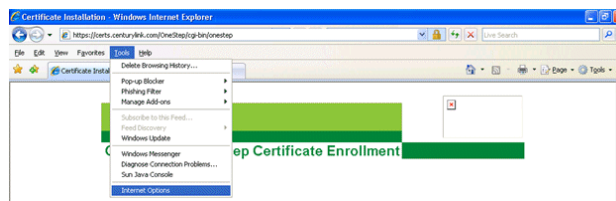


When the client digital certificate is fully loaded on the workstation, the registration process is complete.



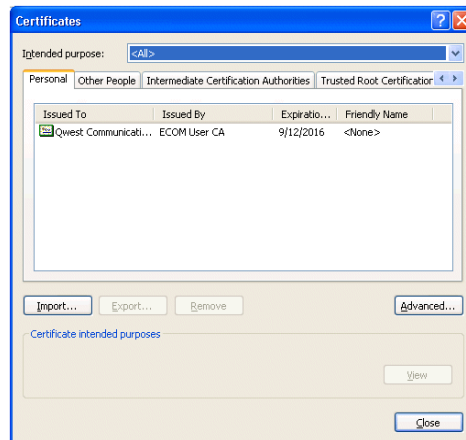
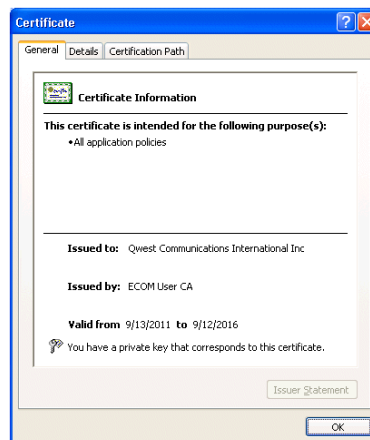
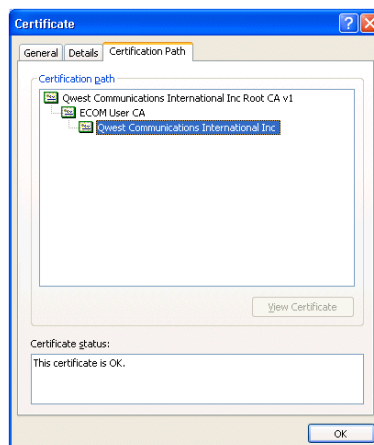
Verifying the installed certificate

- 1 Choose **Tools > Internet Options** in your Internet Explorer browser.



- 2 On the **Content** tab, choose **Certificates**.



3 Double click on the certificate's name.**4 View the General tab.****5 View the Certification Path tab.**

Modifying the java.policy file

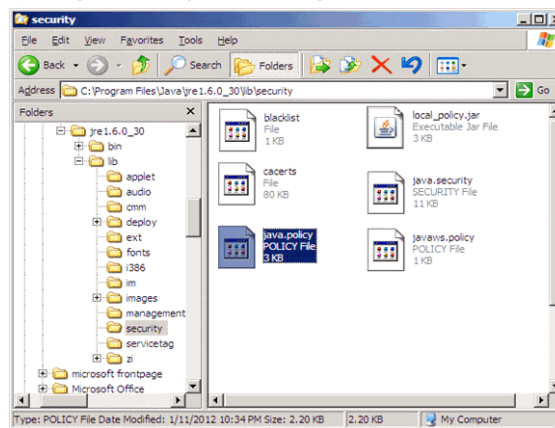
Important: CenturyLink highly recommends that you create a backup copy of the java.policy file.

- 1 Using Windows Explorer, access the java.policy file from the folder C:\ProgramFiles\Java\jre1.6.0_xx\lib\security (where xx is either 25 or 30. If you have folders for both jre1.6.0_25 and jre1.6.0_30, use the 30 folder).

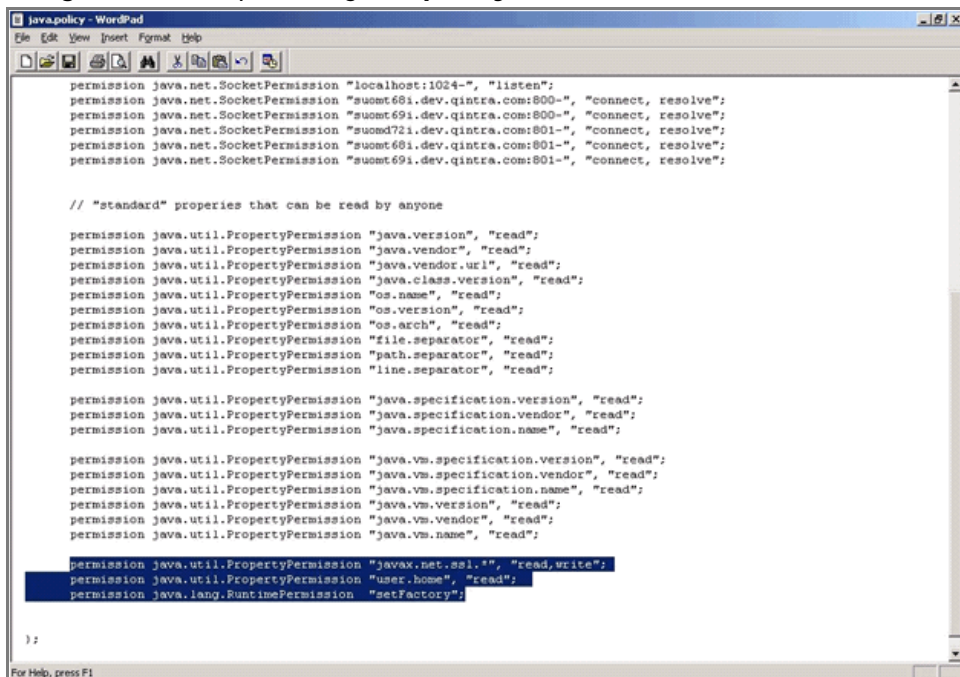
- 2 Select the **java.policy** file.

- 3 Select **Edit > Copy**, then select **Edit > Paste**.

A copy of the java.policy file appears in this same folder.



- 4 Using WordPad, open the **java.policy** file.



- 5 Edit the **java.policy** file by adding the following 3 lines:

- permission java.util.PropertyPermission "javax.net.ssl.*", "read,write";
- permission java.util.PropertyPermission "user.home", "read";
- permission java.lang.RuntimePermission "setFactory";

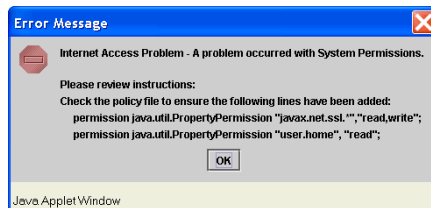
Insert these lines at the bottom of the file just above the `};` symbol.

Tip: If you're reading these guidelines in Adobe Acrobat, you can use the **Select Text** tool to select the lines of text, copy them, and paste them into the java.policy file. Copy and paste one line of text at a time eliminating the leading bullet.

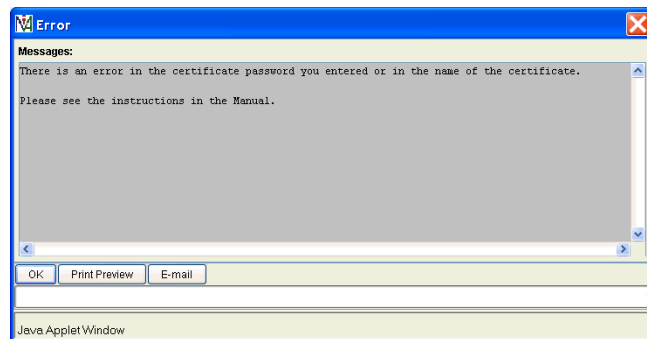
6 Save and close the **java.policy** file.

If you are unable to access the IMA PreOrder/Order/PostOrder functions after completing the above procedure, do one of the following:

- If you do not receive an error message, close all active windows and programs and restart your computer.
- If one of the following error messages displays, follow the instructions and try accessing IMA PreOrder/Order/PostOrder again:



If this error message displays, check the **java.policy** file and make sure the 3 new additional lines you entered are accurate and placed correctly.



If this error message displays, check to make sure the certificate password and name are correct. The password is one you previously entered for the certificate or **qwest1**. The certificate name in your **UserID** folder must be **QwestIMACertificate.p12**.

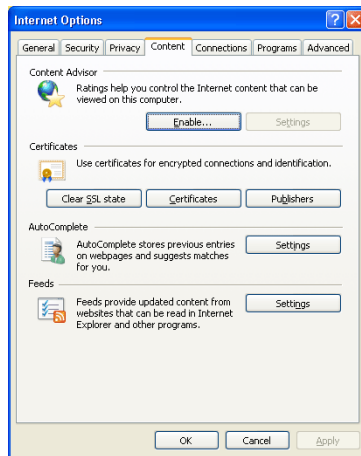
Note: For digital certificate assistance, call the CenturyLink Wholesale Systems Help Desk (888-796-9102, option 2).

Importing your digital certificate to Internet Explorer

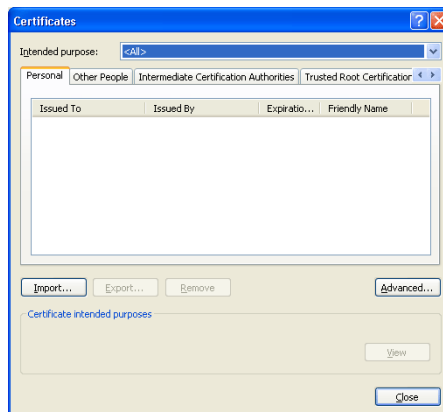
This section is for current and new Internet Explorer users and explains how to “move” your digital certificate.

All requirements for modifying the java.policy file must be completed before continuing.

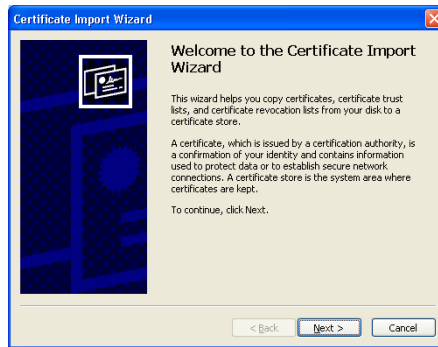
- 1 Open Internet Explorer.
- 2 From the **Tools** menu, select **Internet Options**.
- 3 Click the **Content** tab.



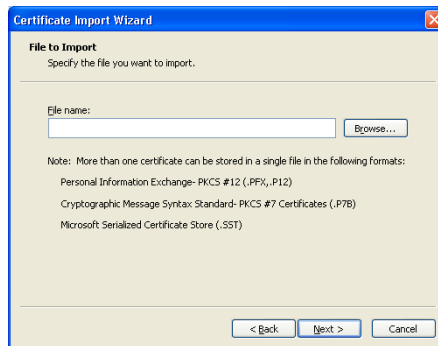
- 4 Click **Certificates**.



5 Click **Import** to activate the **Certificate Wizard**.



6 Click **Next**.

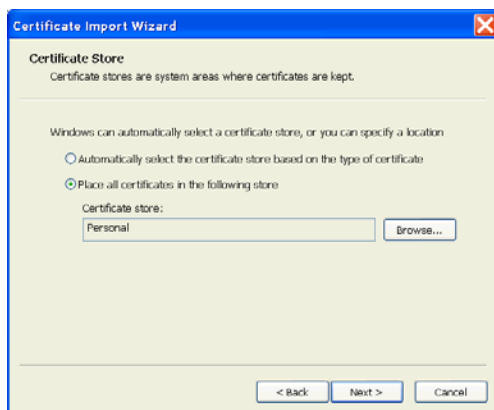
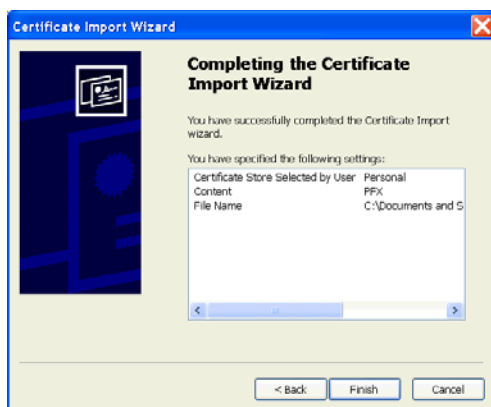
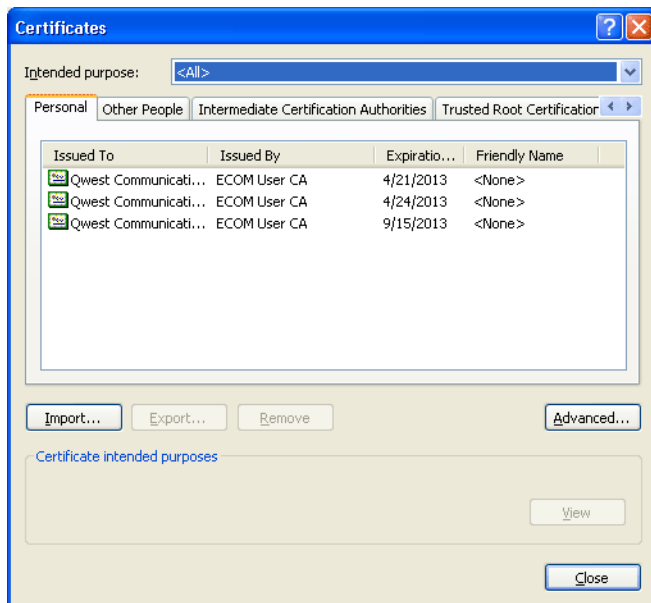


7 Type the URL or select **Browse** to locate your certificate. Your certificate should be located at **C:\Documents and Settings** under your specific **UserID** and the file name of the certificate should be **QwestIMACertificate.p12**.

8 Click **Next**.



9 In the **Password** field, type **qwest1**. This password is case-sensitive.

10 Click Next.**11 Leave the settings at their default positions and click Next.****12 Click Finish.**

The name of the certificate appears in the **Certificates** list box along with a confirmation message.

13 Click OK and close all active windows.

Connecting to IMA

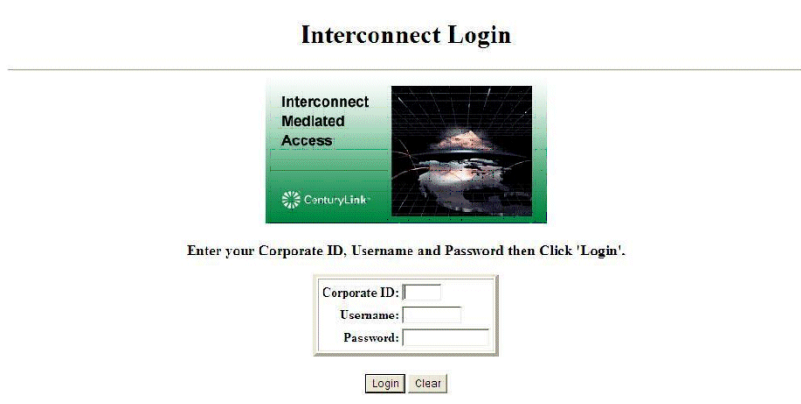
If you are accessing IMA over the Internet, several factors external to CenturyLink (such as your Internet service provider—your ISP—and Internet traffic) may impact response time.

If you're accessing IMA using a digital certificate, use this URL: <https://ima.centurylink.com/ima>. (CenturyLink recommends that you bookmark this URL.)

Logging in to IMA for the first time

The **Interconnect Login** window ensures that only authorized users access IMA. To log in, you need your corporate ID, username, and password. (You can get this information from your system administrator.)

See "System security" on page 5.

The image shows a screenshot of the 'Interconnect Login' window. At the top, the title 'Interconnect Login' is centered. Below the title is a horizontal line. Underneath the line is a green rectangular box with the text 'Interconnect Mediated Access' and the CenturyLink logo. To the right of this box is a small image of a globe with network lines. Below these elements, the text 'Enter your Corporate ID, Username and Password then Click 'Login'.' is centered. Underneath this text is a form with three input fields: 'Corporate ID:', 'Username:', and 'Password:'. Below the form are two buttons: 'Login' and 'Clear'.

- 1 In the **Interconnect Login** window, type your corporate ID, username, and password. (These fields are case-sensitive.)

- 2 Click **Login**.

The first time you log in to IMA, your password is the same as your username. As soon as you create your personal profile, you should change your password. (See page 21.)

Creating your personal profile

The first time you log in to IMA, you must fill in your personal profile before you can go on to other tasks. Your personal profile contains information that CenturyLink uses to contact you.

Tip: Administrators—you might want create a joint e-mail account and phone number so that all users have access to this e-mail or phone number in case of absence, emergency, or work flow. This group e-mail and phone number can then be entered in the individual user's profile.

- 1 Fill in the fields. (**Floor** and **Room/Mail Stop** are optional.)
 - a For your telephone and fax numbers, use the format **555-555-5555**.
 - b Fill in your e-mail address, fax number, or both to indicate how you want to receive system notifications.
- 2 Click **Update Database**. (If you click **Logout**, your profile won't be saved and you'll still need to create your personal profile next time you log in.)
- 3 Click **Return to Main Menu**.

The **Interconnect Functions** window appears. Depending on your access level, you may see fewer options.

Interconnect Functions

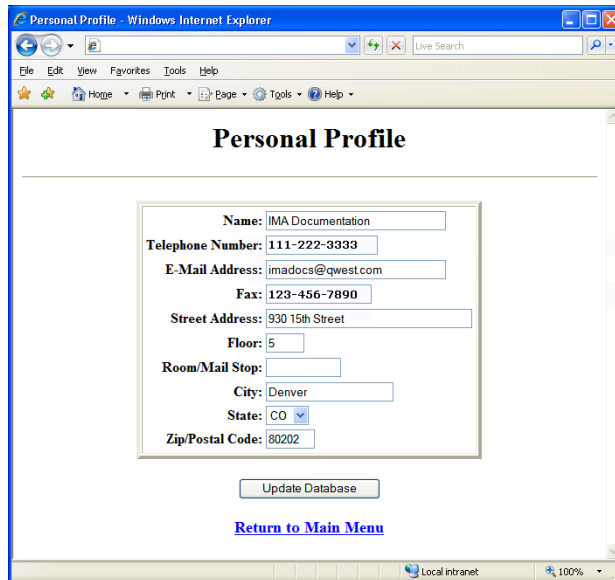
[System Administration](#)
[User Administration](#)
[Set CUID](#)
[PreOrder/Order/PostOrder](#)
[Status](#)
[Line Loss](#)
[Batch Hot Cut Status](#)
[Firm Order Manager](#)
[Lock Administration](#)
[Resource Return](#)
[SOV Recent Page Report](#)
[Virtual CSR](#)
[View Reference Data](#)
[Logout](#)

Important: Be sure to use buttons within IMA. Don't use the browser's buttons (e.g., **Back**) or you may get an error.

Modifying your personal profile

After you have created and saved your personal profile, you can modify it further as needed.

- 1 In the **Interconnect Functions** window, click **User Administration**.

A screenshot of a web browser window titled "Personal Profile - Windows Internet Explorer". The browser's address bar shows "Local intranet" and the page is displayed at 100% zoom. The main content area is titled "Personal Profile" and contains a form with the following fields: Name (IMA Documentation), Telephone Number (111-222-3333), E-Mail Address (imadocs@qwest.com), Fax (123-456-7890), Street Address (930 15th Street), Floor (5), Room/Mail Stop (empty), City (Denver), State (CO), and Zip/Postal Code (80202). Below the form is an "Update Database" button and a "Return to Main Menu" link.

- 2 Click in each field to be modified, and change the information. (Remember to use the format **555-555-5555** for the telephone and fax numbers.)
- 3 Click **Update Database**.
- 4 Click **Return to Main Menu**.

Changing your password

For security reasons, you should change your password often.

- 1 In the **Interconnect Functions** window, click **Set Password**.

The screenshot shows a web browser window titled "Set Password - Windows Internet Explorer". The address bar is empty. The page content includes the title "Set Password" in a large font. Below it is a horizontal line, followed by the text "Enter New Password." in bold. There is a form box containing three input fields labeled "Old Password:", "New Password:", and "Re-Type New Password:". Below the form box are two buttons: "Set Password" and "Clear". At the bottom of the page is a blue link that says "Return to Main Menu".

- 2 Do the following:

In this field ...	Type ...
Old Password	Your current password
New Password	Your new password (6–8 characters, at least one of which is a number or special character)
Re-Type New Password	

- 3 Click **Set Password**.
IMA changes your password.
- 4 Click **Return to Main Menu**.

Index

C

CenturyLink service manager 9, 6
connecting to IMA 19

D

digital certificates
 downloading (and registering) 10
 importing 16
 private keys 11
 requesting 9
downloading
 digital certificates 10
 Java Runtime Environment 8

F

Facility-Based Directory Listings Guide 6

H

hardware requirements 7

I

IMA
 accessing with a digital certificate 19
 logging in for the first time 19
IMA hours 5, 6
importing digital certificates 16

J

Java Runtime Environment
 downloading 8
java.policy file, modifying 14

L

logging in to IMA 19
Loop Qualification and Raw Loop Data CLEC Job Aid 6

P

passwords, changing 21
personal profile
 creating 20
 modifying 21
private keys, digital certificate 11

R

requirements
 hardware 7
 software 7
resources

documents 6
websites 6

S

service manager, CenturyLink 9
software requirements 7
system security 5

W

websites
 CenturyLink E-Business 6
 IMA access 6
 Products and Services 6
 Wholesale Customer Contacts Business Procedure 6
 Wholesale Resources 6
 Wholesale Systems 9
Wholesale Systems website 9